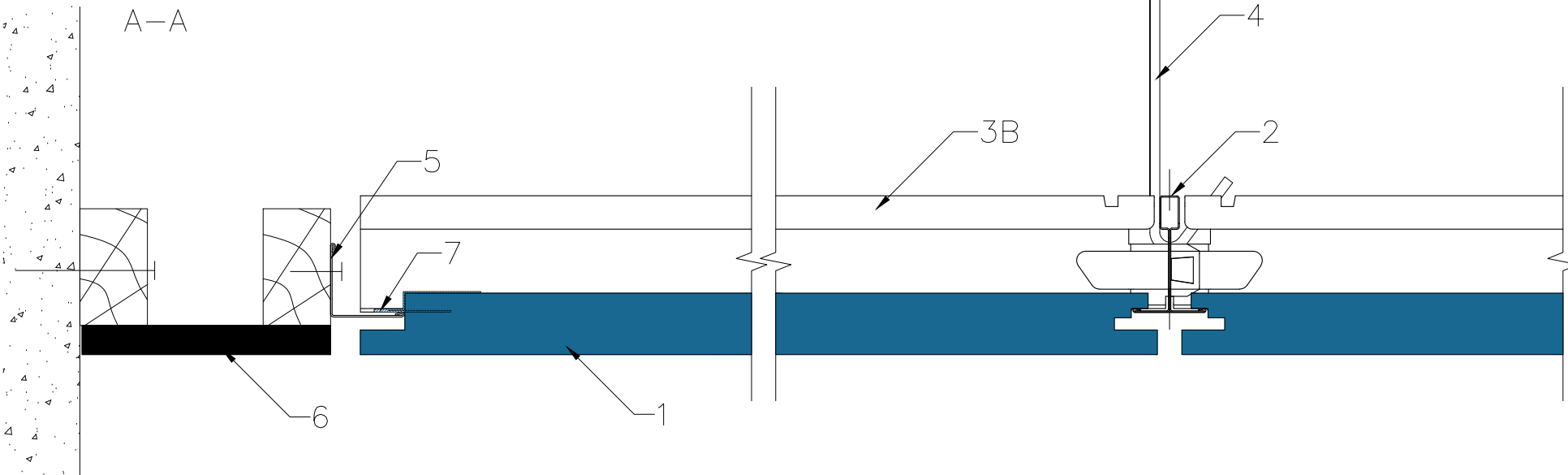



1. Tile ROCKFON, edge M
2. Mainrunner T24 C/H38 3600 white
- 3B. Cross Tee T24 C38 1200 white
4. Adjustable hanger
5. Wall Angle 24/24 3050 white
6. Gypsum Frieze
7. Clip on cutted M-edge



All screws and other fastenings shown are indicative and illustrative only.
Specific fasteners should be chosen dependent on substrates and materials being used.

Information: Rockfon system M T24 Perimeter detail Gypsum frieze – M1/M2 edge	Date: 15-11-2022	Drawing Type: TECHNICAL		
	Drawing No.: SCA-01-T24-MM-11.1	Drawn by: OPTS	Scale: 1:2	
	Contact information: info@rockfon.dk	Revision No.: 1		

We kindly draw your attention to the fact that the above drawings should be considered as guidelines and therefore are without responsibility on the part of Rockfon.