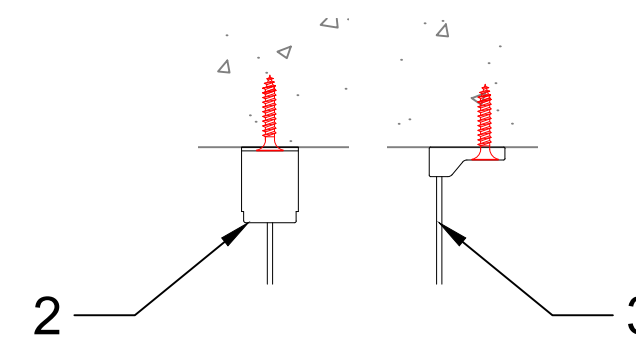


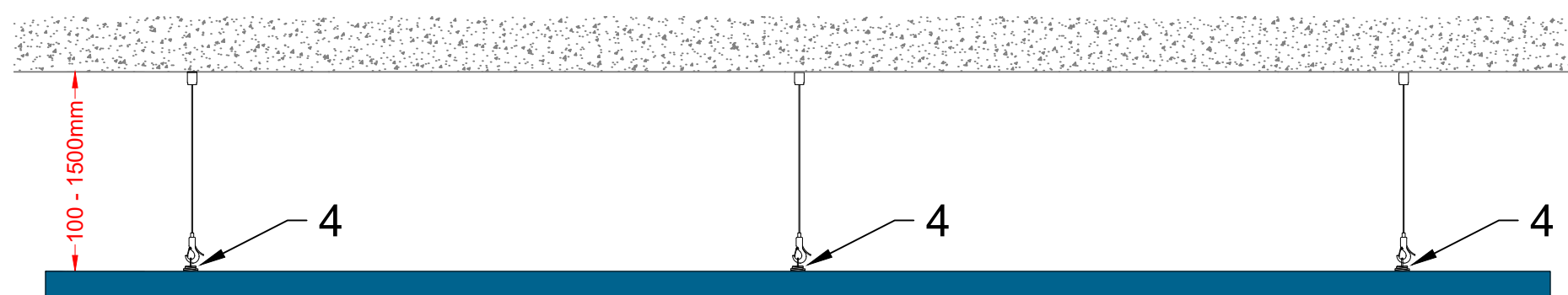
1	Eclipse Island - Rectangle (2360 x 1160mm)
2	Design Suspension Hanger
3	Classic Suspension Hanger
4	Spiral Anchor

Notes

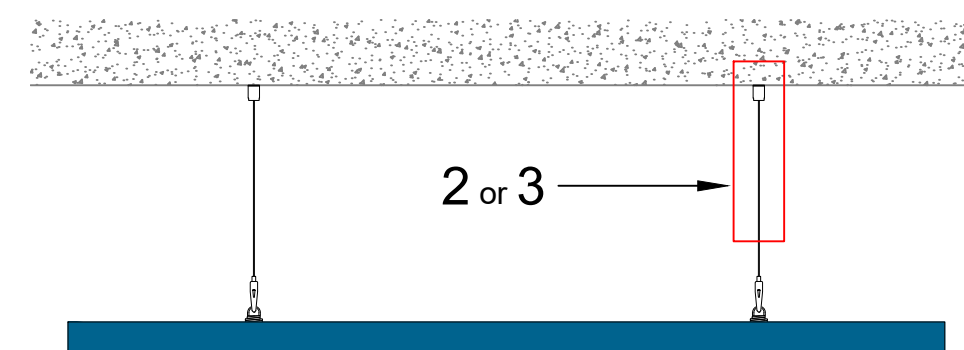
- Each 2360mm Rectangle Eclipse Island suspended with additional load up to 5kg requires:
 - 6 Suspension Hangers (Classic or Design), and
 - 6 Spiral Anchors
- Spiral Anchors are inserted into the back of the Eclipse through 3 of the 5 pre-made holes in each reinforcing strip (as indicated). Other locations may be possible, please contact the Technical department for more information.
- Integrated services up to 5kg may be supported on the Eclipse, the weight must be transferred to the reinforcing strips.



Section A - A



Section B - B



Drawing must be read in conjunction with the latest System Description for Rockfon System Eclipse Island

All screws and fixings shown are for illustrative purposes only. Suitable fixings should be selected based on structure and materials used.

Information:

Rockfon System Eclipse Island - 2360 x 1160mm Rectangle
 System Overview - Classic/Design Suspension
 With Additional Load (up to 5kg)

Date:

9 July 2021

Drawn by:

C Murphy

Scale:

1:10 @ A3

Revision

0

Drawing Number:

UKI-03-SUS-ECL-04

Drawing Type:

Technical

Contact Information:

technical.uki@rockfon.com

Part of the ROCKWOOL Group



Rockwool Limited T/A Rockfon, Pencoed, Bridgend CF35 6NY | rockfon.com

We kindly draw your attention to the fact that the above drawings should be considered as guidelines and therefore are without responsibility on the part of Rockfon.