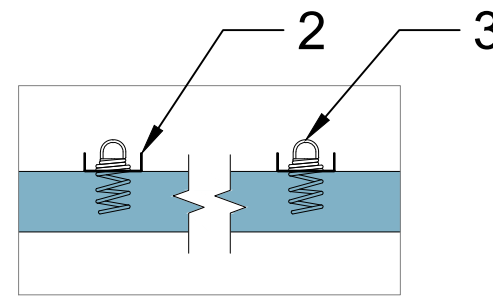
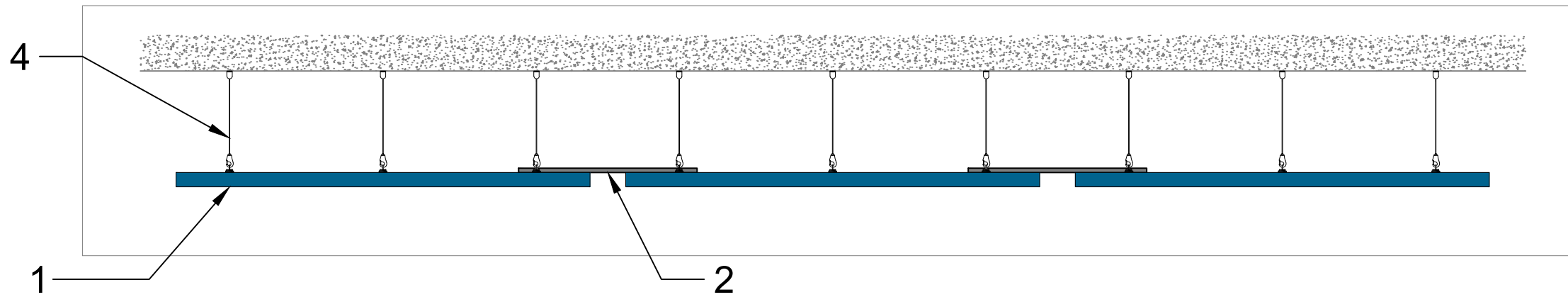


Section A - A (1:5)

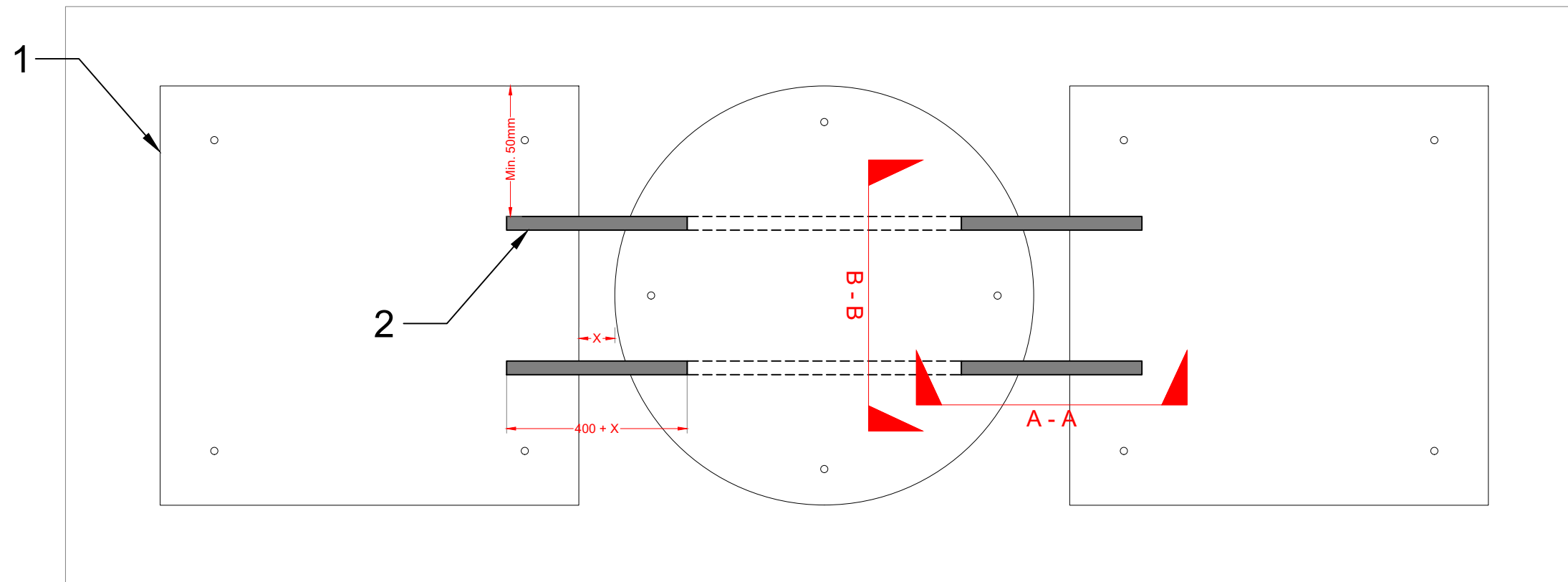


Section B - B (1:5)

1	Eclipse Island
2	12x38mm Galvanised Channel (#203209)
3	Spiral Anchor
4	Classic/Design Suspension Kit



1 2



1 2

**Notes**

- Square & Circle Eclipse Islands shown for visual purposes only, installation methodology would be applicable for all shapes and sizes.
- Galvanised channel to be secured to islands using additional spiral anchors.
- 2x lengths of channel required for Islands <1160mm. 3x lengths of channel required for Islands <2360mm
- Additional Spiral Anchors can be sourced through customer services.
- Galvanised channel to be cut on site
- Dimension 'x' can be 0 - 300mm
- For aesthetic reasons visible underside of cut channel (between islands) should be finished by installing contractor.

**Information:**  
Rockfon System Eclipse Island - Installation Detail  
Connecting Islands to Ensure Uniform Spacing

<b>Date:</b> 4 May 2018	<b>Drawn by:</b> C Murphy	<b>Scale:</b> 1:15 @ A3	<b>Revision:</b> 0
<b>Drawing Number:</b> UKI-03-SUS-ECL-10		<b>Drawing Type:</b> Technical	
<b>Contact Information:</b> technical.uki@rockfon.com			

Part of the ROCKWOOL Group



Rockfon Limited T/A Rockfon, Pencoed, Bridgend CF35 6NY | rockfon.com

We kindly draw your attention to the fact that the above drawings should be considered as guidelines and therefore are without responsibility on the part of Rockfon.