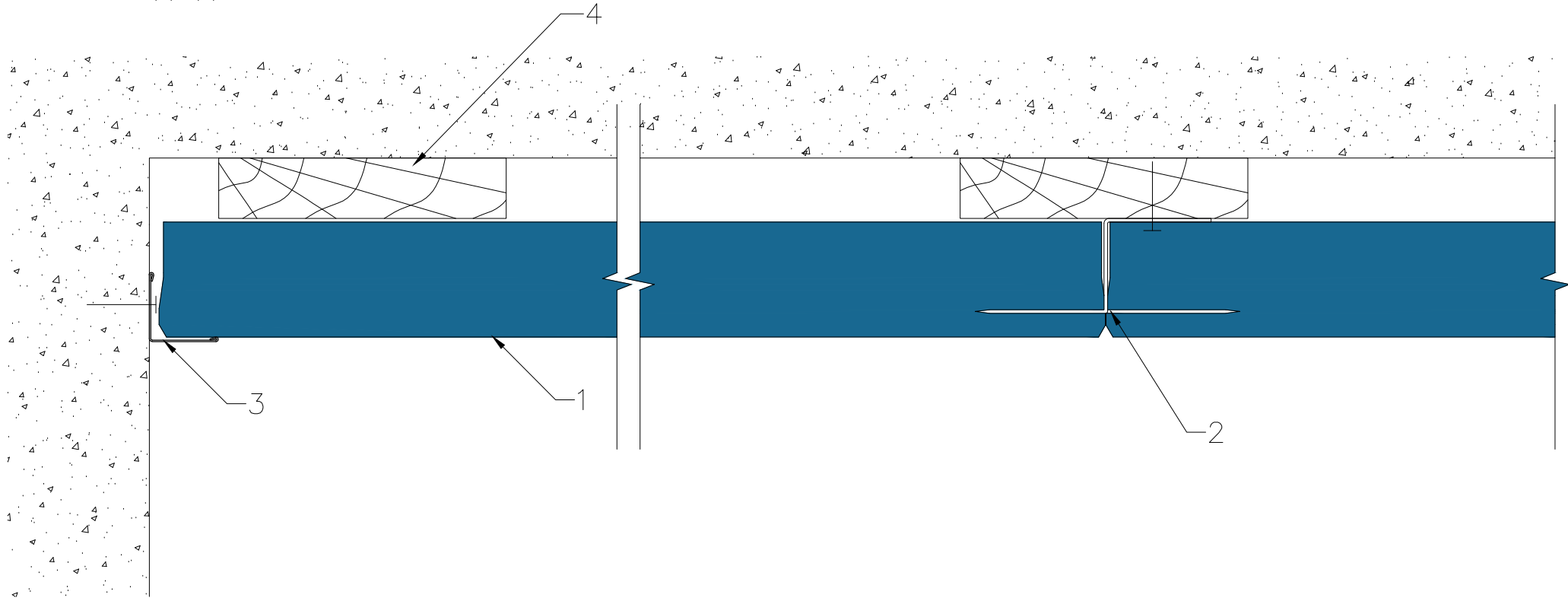



1. Tile ROCKFON, edge B
2. Cosmos Hooks
3. Wall Angle 24/24 3050 white
4. Wooden lath



All screws and other fastenings shown are indicative and illustrative only.  
Specific fasteners should be chosen dependent on substrates and materials being used.

<b>Information:</b> Rockfon system B Hook Perimeter detail Wall angle and hook – B edge	<b>Date:</b> 14-07-2022	<b>Drawing Type:</b> TECHNICAL		
	<b>Drawing No.:</b> SCA-01-DIR-BSH-11.1	<b>Drawn by:</b> OPTS	<b>Scale:</b> 1:2	
	<b>Contact information:</b> info@rockfon.dk	<b>Revision No.:</b> 2		

We kindly draw your attention to the fact that the above drawings should be considered as guidelines and therefore are without responsibility on the part of Rockfon.